

ANNEX E TO FAIRFIELD COUNTY EMERGENCY OPERATIONS PLAN

LAW ENFORCEMENT

I. AUTHORITIES AND REFERENCES

A. Purpose

The Fairfield County Sheriff's Office will coordinate all local law enforcement response efforts and use of all law enforcement personnel and equipment in Fairfield County during a disaster situation.

B. Authority

1. Fairfield County Ordinance No. 487, signed May 9, 2005.
2. South Carolina Legislative Act Number 199, July 30, 1979.
3. Fairfield County Mitigation Plan

C. Definition

LAW ENFORCEMENT SERVICE--Composed of all law enforcement organizations, their personnel, facilities and resources at county level. Upon request, qualified commissioned personnel from state and federal agencies may be utilized.

II. SITUATION AND ASSUMPTIONS

A. Situation

1. Fairfield County is subject to disasters (*natural, technological, or terrorist act*) that could result in a need for increased law enforcement, great affect the public health and result in a large number of deaths and/or injuries and damage. While Fairfield County has the capability and adequate resources to meet routine needs, during a disaster, problems are multiplied and made more complex. A disaster could tax the capability and resources of Fairfield County.
2. Additionally, the responsibility for warning the public of impending disasters, coordinating law enforcement activities and maintaining a radiological monitoring and reporting capability fall within the functional areas of law enforcement.

B. Assumptions

1. Activities of local law enforcement agencies will increase significantly during an emergency operation.
2. Adequate law enforcement resources and services will often be available through existing mutual aid agreements.
3. If local capabilities are overtaxed, support can be obtained from state and federal law enforcement agencies.

III. MISSION

To provide a well-organized and equipped law enforcement organization which operates 24-hours per day for traffic control, crime prevention, security, road blocks, warning and radiological monitoring during a disaster situation.

IV. CONCEPT OF OPERATIONS

A. General

1. Activities will be directed and coordinated from the County Emergency Operations Center (EOC) which will be at one of the following locations:
 - a. **Primary**---is at 100 Tidewater Dr, Winnsboro, SC.
 - b. **Alternate**--Fairfield County Governmental Complex located at 350 Columbia Rd, Winnsboro, SC.
2. The County Sheriff has overall responsibility for the coordination of law enforcement and support forces during a disaster situation. State forces used in support of this Plan will be committed on a mission-type basis. *See Appendix 2*
3. The police chiefs of the various municipalities will direct emergency law enforcement operations in their respective jurisdictions.
4. All law enforcement personnel will trained on the principles of the National Incident Management System (NIMS) and integrate those principles into all law enforcement planning and response operations.

B. Actions by Phases of Emergency Management

The following actions are common to all law enforcement agencies during the three phases listed below:

1. **Preparedness**
 - a. Develop procedures to implement this Annex
 - b. Participate in annual exercises to test emergency plans and procedures.
 - c. Identify, train and assign personnel to radiological monitoring teams and response teams as required.
 - d. Determine locations of shelters in jurisdictional areas. *See Appendix 3.*

- e. Determine locations and responsibility for establishing and manning Traffic Access Control Points (TACP's) in jurisdictional areas. *See Appendix 7.*
- f. Determine critical and sensitive facilities and the additional requirements needed to adequately safeguard them. *See Appendix 4.*
- g. Develop an accelerated training program for auxiliary police and radiological monitors.
- h. Determine evacuation routes out of the disaster area into the county. *See Appendix 7.*
- i. Develop a pass system for essential workers, support personnel and emergency operations. *See Appendix 8.*
- j. Develop procedures for emergency vehicle identification. *See Appendix 8.*
- k. Check readiness of law enforcement facilities, equipment and supplies and correct deficiencies, if any.
- l. Develop plans to reduce the prisoner population and provide for the care and security of those remaining and to be received from the disaster area.
- m. Develop plans to provide security in the shelter areas and other affected areas such as a disaster area.
- n. Develop procedures for limiting access to evacuated areas during response and recovery operations.
- o. Identify potential impediments to evacuation plan alternate/contingency routes and avoid impediments and report actual impediments to the EOC for removal.
- p. Ensure law enforcement integrate NIMS principles in all planning to include Incident Command Post (ICP) Operations. As a minimum, primary officers for all law enforcement agencies will complete FEMA's Awareness Course, or an equivalent course.

2. **Response**

- a. Assign liaison officer to Emergency Operations Center(s).
- b. Assign and man Traffic Access Control Points along evacuation routes.
- c. Perform radiological monitoring assignments, as directed.
- d. Analyze intelligence information regarding any covert or overt trends with respect to sabotage, riot, looting, and other unusual acts.
- e. Secure EOC once activated for emergency operations.

- f. Assign law enforcement personnel in reception centers, lodging and feeding facilities, and emergency shelters.

3. **Recovery**

- a. Maintain liaison with respective Emergency Operations Center(s).
- b. All law enforcement agencies will continue to perform disaster responsibilities and functions within affected communities until local governmental authorities are able to return police responsibilities to normal conditions.

4. **Mitigation**

- a. Identify resources including personnel and equipment.
- b. Identify critical facilities within their jurisdiction.
- c. Access vulnerability for terrorist or hostage event.

V. **ORGANIZATION AND ASSIGNMENT OF RESPONSIBILITIES**

A. **Organization**

1. *See Organization Chart, Appendix 1.*
2. The Fairfield County Sheriff is the Chief of Law Enforcement and is responsible for coordinating the law enforcement activities of the following forces when they are requested to support the conduct of operations under this plan. Elements of the Fairfield County Law Enforcement Service consist of the following:

a. **County Government**

- (1) Fairfield County Sheriff's Department
- (2) Town of Winnsboro Department of Public Safety
- (3) Town of Ridgeway Police Department

b. **State Government**

(Supporting services upon request to State)

- (1) S.C. Law Enforcement Division (SLED) coordinates law Enforcement activities of the following agencies:
 - a. S.C. Department of Transportation
 - b. S.C. Department of Natural Resources
 - c. S.C. Army National Guard, if available

B. **Responsibilities**

1. Coordinates all emergency response and recovery law enforcement activities at the county level.

2. Maintain law and order.
3. Provides security for critical facilities and resources.
4. Implements evacuation procedures as required by the situation.
5. Provides access control in restricted and/or evacuated areas.
6. Coordinates with higher levels of government for law enforcement support during emergency response activities.

VI. ADMINISTRATION AND LOGISTICS

A. Administration

Initial situation reports should be given to the Sheriff as soon as practicable. Reports will be consolidated and submitted to Emergency Management Department for analysis and distribution and should contain but not be limited to the following:

1. Type of emergency.
2. Damage incurred.
3. Action taken.
4. Casualties incurred.
5. Nature and extent of any assistance required.

B. Logistics

1. Organic supplies, operational aids and transportation will be used by all forces. Additional supplies and transportation will be requested through the County Emergency Operations Center.
2. Law Enforcement resources are listed and identified in *Appendix 6 to this Annex*.

VII. DIRECTION AND CONTROL

A. Direction

When conditions warrant activation of the EOC, coordination of law enforcement activities will be under the direction and control of the County Sheriff, and they will be conducted from the Emergency Operations Center (EOC).

- B.** The Fairfield County EOC will be located at one of the following sites and will be announced by the Fairfield County Emergency Management Department at the time of activation:

1. **Primary**-- is located at 100 Tidewater Dr, Winnsboro, SC.
2. **Alternate**--Fairfield County Governmental Complex is located at 350 Columbia Rd., Winnsboro, SC.

C. Line of Succession

1. Sheriff, Fairfield County Sheriff's Office.
2. Chief Deputy, Fairfield County Sheriff's Office.
3. Captain, Fairfield County Sheriff's Office.

D. Communications

Law enforcement operations will be directed over the county law enforcement radio communications net. Alternate communications will be wireline and wireless telephones. *See Appendix 5.*

VIII. PLAN DEVELOPMENT AND MAINTENANCE

A. Development

1. The Sheriff of Fairfield County will be responsible for the development and maintenance of this annex.

B. Maintenance

1. This annex will be reviewed annually.
2. This annex will be updated as necessary, based upon deficiencies identified by drills and exercises, changes in local government structure, or technological changes, etc.

Sheriff, Fairfield County Law Enforcement

Date

Director, Fairfield County Emergency
Management Department

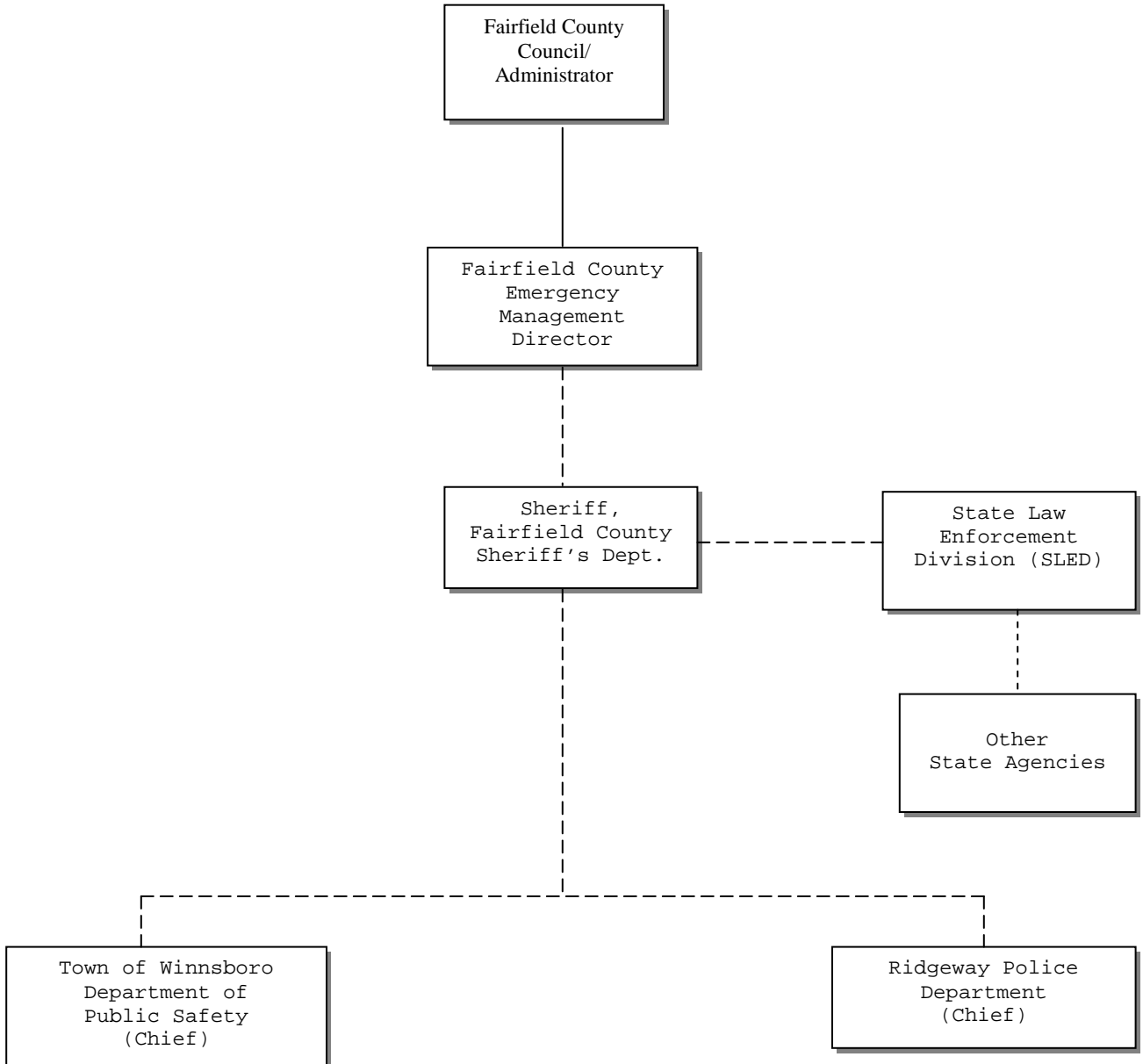
Date

APPENDICES TO ANNEX E:

1. **Organizational Chart**
2. **Alert List**
3. **Fallout Shelter and Congregate Care Facilities**
4. **Vital Facilities**
5. **County Law Enforcement Net**
6. **Personnel and Resource List**
7. **Traffic Control Points and Evacuation Routes--All Hazards**
8. **Identification Criteria**
9. **Host Area Requirements Statement (If Required)**
10. **Dam Failure/Flooding**
11. **Incident Command Operations/Communications**

APPENDIX 1 TO ANNEX E, ORGANIZATION CHART

FAIRFIELD COUNTY



_____ **Direction**

- - - - - **Coordination**

APPENDIX 2 TO ANNEX 3, LAW ENFORCEMENT--ALERT LIST

FAIRFIELD COUNTY

TITLE

Fairfield County Sheriff

Chief Deputy, Fairfield County Sheriff's Department

Town of Winnsboro Department of Public Safety

Ridgeway Police Department

S.C. Law Enforcement Division (*Assistance through County EOC to State EOC*)

S.C. Department of Natural Resources (*Assistance through County EOC to State EOC*)

S.C. Highway Patrol

*****ALL TELEPHONE NUMBERS ARE KEPT CURRENT IN OUR COUNTY ALERT LIST
SOP, DISTRIBUTED TO APPROPRIATE AGENCIES.***

APPENDIX 3 TO ANNEX E, LAW ENFORCEMENT--FALLOUT AND CONGREGATE CARE FACILITIES

FAIRFIELD COUNTY

NUMBER

SHELTERS

1	Geiger Elementary School
2	FAIRFIELD COUNTY CENTRAL HIGH SCHOOL
3	FAIRFIELD MAGNET SCHOOL
4	Fairfield Career Center
5	Fairfield Middle School
6	WHITE OAK BAPTIST CONFERENCE CENTER
7	McCrorey Liston Elementary School
8	Kelly Miller Elementary School

NOTE: BOLD PRINT designates shelter areas specified in Fairfield County (FNF) Plan.

*****ALL TELEPHONE NUMBERS ARE KEPT CURRENT IN OUR COUNTY ALERT LIST SOP, DISTRIBUTED TO APPROPRIATE AGENCIES.***

APPENDIX 4 TO ANNEX E, LAW ENFORCEMENT--VITAL FACILITIES

FAIRFIELD COUNTY

1. *MEDIA FACILITIES*

- a. Television Station
WCTV, Channel 4 ((*Winnsboro Cablevision*))
- b. Newspaper
Herald-Independent

2. *GOVERNMENT FACILITIES*

- a. Federal Buildings
U.S. Post Offices
- b. County Buildings
Fairfield County Courthouse
Fairfield County Governmental Complex
Fairfield County Detention Center
- c. City/Town Buildings
Winnsboro Town Hall
Ridgeway Town Hall
Jenkinsville Town Hall

3. *HOSPITALS/HEALTH CARE FACILITIES*

Fairfield Memorial Hospital
Fairfield County Primary Healthcare
Fairfield County Health Department
Fairfield County Department of Mental Health

4. *NURSING HOMES*

Fairfield Homes--Ridgeway, S.C.
Fairfield Manor--Ridgeway, S.C.
Tanglewood Health Care Center--Ridgeway, S.C.

FAIRFIELD COUNTY

5. PUBLIC UTILITIES

Town of Winnsboro
South Carolina Electric and Gas Company
Fairfield County Rural Electric Cooperation

6. HIGHWAY SYSTEMS

a. Major Highways

I-77
U.S. 321
U.S. 21
S.C. 215
S.C. 34
S.C. 200
S.C. 269
S.C. 213

b. Bridges

Newberry Road at Broad River
U.S. Highway 321 South at Cedar Creek
State Highway 213 at Broad River
State Highway 215 South at Cedar Creek
River Road at Lake Wateree

7. OTHER

- a. Sewer Plants
- b. Water Treatment Facilities
- c. Water Tanks

APPENDIX 4 TO ANNEX E, LAW ENFORCEMENT—VITAL FACILITIES (CONT'D)

LAW ENFORCEMENT PROTECTION AND RESPONSE PLANS FOR FACILITIES/INFRASTRUCTURES

1. The Fairfield County Sheriff's Office will coordinate and use all law enforcement personnel and equipment in the county during any disaster situation. We will provide a well-organized and equipped law enforcement organization which will operate 24 hours per day for traffic control, crime prevention, security, and road blocks.
2. The Sheriff's Office will assign a liaison officer to the EOC center.
3. The Sheriff's Office will assign and man traffic control points along evacuation routes.
4. We will assign law enforcement personnel to shelters if required.
5. Analyze intelligence information regarding any covert or overt trends with respect to sabotage, riot, looting, and other unusual acts.
6. Assign law enforcement personnel in reception centers, lodging and feeding facilities and emergency shelters.
7. Assign law enforcement agencies will continue to perform disaster responsibilities and functions within an affected area until local governmental authorities are able to return police responsibilities to normal conditions.
8. The Sheriff's Office will assist the Detention Center in securing the prisoners housed in Fairfield County.
9. Conduct quick damage surveys. Some emergencies and disasters cause localized damages and therefore lend themselves to using law enforcement to provide initial damage information. The law enforcement officers on the street would survey their jurisdictions and report the affected areas. This information would be used to develop a more comprehensive assessment.

APPENDIX 5 TO ANNEX E, LAW ENFORCEMENT--COMMUNICATIONS NET

FAIRFIELD COUNTY

NETS

Sheriff	800 MHz
Ridgeway Police Department	800 MHz
Winnsboro Department of Public Safety MHz	800 MHz, 460.525 and 460.400

POLICE TALK-AROUND NET

460.050 MHz

EMS and RESCUE SQUAD FREQUENCY

EMS – 453-5125 transmitter
458-5126 receiver
DPL – 23
Backup 155.220

Rescue Squad - 155.220 MHz

LEA NET

155.525 MHz

FIRE DEPARTMENT

County Volunteer Fire Departments	158.955 MHz Tx 154.160 MHz Rx PL 173.8
-----------------------------------	---

Winnsboro Department of Public Safety	460.525 MHz
---------------------------------------	-------------

APPENDIX 6 TO ANNEX E, LAW ENFORCEMENT--PERSONNEL & RESOURCE LIST

FAIRFIELD COUNTY

1. **Fairfield County Sheriff's Department**

a.	Patrol cars with sirens	45
b.	Vehicles with P.A. systems	30
c.	Deputies (Full time)	45
d.	Walkie-talkies	45
e.	Generators for Base Stations	1
f.	Other Resources:	
1.	Teletype	1
2.	4-Wheel Drive Vehicles-crime scene tk	5
3.	Patrol Boat (Radio Equipped)	1
4.	1 Fully-Equipped SWAT Team	1
5.	Incident Command Bus	1
7.	Night Vision Goggles	14
8.	Thermal Imaging	7
9.	Undercarriage Pole Camera	2
10.	Portable PTZ Viper Camera System	1

2. **Town of Winnsboro Department of Public Safety**

a.	Patrol cars with sirens	23
b.	Vehicles with P.A. systems	20
c.	Officers (Full time)	20
d.	Officers (Reserve)	0
e.	Walkie-talkies	30
f.	Generators for Base Station	1

3. **City of Ridgeway Police Department**

a.	Patrol cars with sirens	2
b.	Vehicles with P.A. system	2
c.	Patrolmen (Full time)	1

**APPENDIX 7 TO ANNEX E, LAW ENFORCEMENT--TRAFFIC CONTROL POINTS
AND EVACUATION ROUTES--ALL HAZARDS**

FAIRFIELD COUNTY

A. Fairfield County TCP's for evacuation during crisis relocation, TCP Locations

- | | |
|------------------------------|-------------------------------|
| 1. Interstate 77 North Bound | Chester County Line |
| 2. Highway 21 North Bound | Highway 21 & 200 Intersection |
| 3. Highway 34 East Bound | Kershaw County Line |
| 4. Highway 21 South Bound | Richland County Line |
| 5. Interstate 77 South Bound | Richland County Line |
| 6. Highway 321 North Bound | Intersection 34 |
| 7. Highway 321 South Bound | Intersection 213 |
| 8. Highway 321 South Bound | Richland County Line |
| 9. Highway 215 South Bound | Intersection 213 |
| 10. Highway 215 North Bound | Intersection 34 |
| 11. Highway 34 West Bound | Broad River Bridge |
| 12. Highway 215 North bound | Chester County Line |

B. Fairfield County TCP's for evacuation of ten-mile EPZ at V.C. Summer FNF

1. Intersection of Newberry Road and S.C. Highway 215
2. Intersection of S.C. Highway 269 and U.S. Highway 321 South
3. Intersection of S.C. Highway 213 and U.S. Highway 321 Bypass South
4. Intersection of Newberry Road and U.S. Highway 321 Bypass North

APPENDIX 8 TO ANNEX E, LAW ENFORCEMENT--IDENTIFICATION CRITERIA

FAIRFIELD COUNTY

Identification Cards:

Identification cards will be developed for all personnel who are supporting emergency service operations and maintaining production at essential industries and businesses in risk area and will commute between the host and risk areas. The identification cards will be issued to the appropriate emergency service coordinators or personnel managers at industries, businesses, service centers and governmental departments/agencies and, in turn, the cards will be issued to the personnel involved in emergency service functions or operations. A roster will be developed and maintained on personnel to whom identification cards are issued.

The identification cards contain sufficient information to provide authentic identification of the individuals who are cardholders, plus the department/agency assigned to, and signature and title of the issuing officer or service coordinator.

EXAMPLE: TO BE ISSUED AT TIME OF EMERGENCY

Identification Stickers:

Identification stickers will be developed for the purpose of readily identifying vehicles and equipment that are used to support emergency operations and other functions and operations, transporting members of the work forces between their lodging and place of work or duty station.

The identification stickers will be issued to the appropriate emergency service coordinators or personnel managers at industries, businesses, service centers and governmental departments/agencies and in turn, the cards will be issued to the drivers who operate the essential vehicles or pieces of equipment. A roster will be developed and maintained on personnel and vehicles to whom identification stickers are issued.

Identification stickers will be issued on the basis of two per vehicle or piece of equipment, and will be attached to the lower left corner of the front windshield or driver's side. The second one will be attached to the lower right corner of the rear glass or back-side of vehicle or equipment.

The stickers will contain pertinent information to identify the vehicle and/or equipment, department/agency assigned to, and signature and title of the issuing officer or service coordinator.

EXAMPLE: TO BE ISSUED AT TIME OF EMERGENCY

Vehicle and equipment operators must have the personal identification card in possession in order to be issued an Emergency Operating Permit.

**APPENDIX 9 TO ANNEX E, LAW ENFORCEMENT--HOST AREA REQUIREMENTS
STATEMENT**

FAIRFIELD COUNTY

Personnel

Additional law enforcement personnel will be needed and requested as needed.

Equipment

Vehicles and related equipment to support Law Enforcement Personnel.

Supplies

As needed.

APPENDIX 10 TO ANNEX E, LAW ENFORCEMENT—DAM FAILURE/FLOODING

The Fairfield County Sheriff's Office will ensure public safety and facilitate rescue recovery, and evacuation activities, security and access control measures in and around the disaster site, implemented immediately by first responders. The area will be quickly evaluated in terms of public safety and health to identify the need to implement protective actions as well as the use of protective equipment by response personnel entering the area in order to conduct life saving activities. Evacuation procedures will be implemented and shelters will be used as needed.

Once it is suspected or determined that the incident may have been a result of a terrorist act, law enforcement personnel will begin operations to ensure that the crime scene is safe for emergency responder operations. The chief law enforcement officer will be responsible for the development of crisis management operations plans. Also the chief law enforcement officer will be responsible for the security of sensitive consequence management operations plans.

APPENDIX 11 TO ANNEX E, INCIDENT COMMAND POST (ICP) OPERATIONS AND COMMUNICATIONS

The Fairfield County Sheriff's Office will coordinate all local law enforcement response efforts to include establishment of an Incident Command Post (ICP) and communications when necessary.

Incident Command Post activity will include:

- a. Coordinate with the SCHP, SCDNR, SLED, FBI and other law enforcement agencies that should have a representative in the Incident Command Post or EOC.
- b. Determine a secure location for the Incident Command Post and Staging Area(s) to be used during the incident and insure the locations are communicated to the EOC.
- c. Insure that the Incident Command System is established initially and during a multiagency event, insure that the Unified Command System is established for incident management.
- d. During a RAD event or the potential for one, insure that all law enforcement personnel operating in the 10-mile EPZ are equipped with the appropriate PPE, dosimetry and have received their Potassium Iodide (KI) tablets before leaving the ICP for operations. The County Radiological Training Officer or his representative will deliver dosimetry/KI if needed to the ICP, and can provide on the spot training for any individuals that need it at that time.
- e. During hostile action events, send a Sheriff's Office PIO or representative to the county EOC to act as the lead PIO for the event and coordinate the release of all law enforcement information to the media.

Communications

- a. Law Enforcement communications will be conducted on the Palmetto 800 MHZ system. Law Enforcement agencies that do not have access to the Palmetto 800 system will coordinate with the Sheriff's Office for the use of an 800MHZ radio. The Sheriff's Office will provide an 800MHZ radio to the agency if additional radios are available. If sufficient 800MHZ radios are not available; a request for additional radios will be submitted through the County EOC to the State EOC for additional 800MHZ radios. Until the additional radios are received from the State, the agency requiring the radios will continue to follow their normal communications procedures or use any telephone capabilities available to call the 911 Center or EOC (by landline or cell telephone; or any other means that is available) to request assistance.
- b. The Sheriff or his designee will assign frequencies and channels for mutual aid law enforcement operations in the County.
- c. Insure that all law enforcement personnel, regardless of agency, know what channels are assigned for event response.
- d. Insure that all law enforcement personnel understand that in the event of radio problems, they are authorized to use land line telephones, cell phones or any means of communication available to them to communicate with the ICP, EOC or 911 Center.